

Golden

Resort Municipality Initiative

Annual Report 2017



Submitted by:



Prepared by:

Jon Wilsgard, CAO

With supporting
data from:

Tourism Golden

1. Project Progress

1.1. Resort Municipality Initiative (RMI) Context

Golden has participated in the RMI program since 2007. Each RMI community has a Resort Development Strategy (RDS), which identifies the community’s vision, goals, and projects in support of RMI program objectives for the 2015-2017 period.

1.2. Resort Development Strategy Vision

The vision for the development of the resort community and region (the Resort Development Strategy) represents a melding of the insight, desires, hopes, and brand positioning of Town Council and the DMO, manifested in the following statement:

Golden will inspire target visitors both Canadian and international, to visit and explore Kicking Horse Country. “Golden will be seen as an area steeped in history and tradition, set in a spectacular natural setting - a real place, exuding the spirit of discovery and exploration.”

1.3. Resort Development Strategy (RDS) Goals

The table below lists Golden’s 2015-2017 RDS goals. The table gives a high level understanding of their progress .

Resort Development Strategy Goals	Progress on Resort Development Strategy Goals			
	No Change	Some Progress	Extensive Progress	Goal Achieved
1. Improve and Enhance the Built Environment <ul style="list-style-type: none"> • Increase general attractiveness of community • Establish perceptions consistent with brand positioning • Provide accessibility to community and virtual information • Focus visitors to community portals, destinations, and cultural nodes • Raise visitor confidence in way finding and directions • Establish and imprint market awareness and identity of the community 			X	
2. Enhance Cultural Vibrancy and Identity <ul style="list-style-type: none"> • Increase general attractiveness of community • Build rationale for destination status • Establish perceptions consistent with brand positioning • Increase length and number of overnight stays • Create a compelling reason for visitation 				X
3. Enhance Key Existing Tourism Product Infrastructure <ul style="list-style-type: none"> • Increase frequency and scope of use • Increase length and number of overnight stays • Build rationale for destination status • Expand repertoire of destination activities 			X	
1. Annually Report on Performance Measuring			X	

1.4. Project Details

The following section describes progress on the individual projects in greater detail. The financial breakdown for the projects can be found in Appendix 1.

Project Term	2015-17 RDS	
Project Title	Corridor Enhancement	
Project description	Aesthetic improvements to the Highway One corridor from junction of Highway 1 with 95 to the western entrance. Often termed “the strip” this section of commercial establishment typifies the “anywhere USA” moniker and a focused revitalization of public space, mobility and use.	
Project rationale	This area of the highway represents the majority of accommodators in the community; it is felt that the improvements will significantly and directly impact the visitor traffic to the area. This project was rated along with the Visitor Sign Strategy by the RMI Advisory Committee as the highest priority project for the 2012-2016 RDS	
Project status	Completed. (Under current RDS plan – more to come under a future RDS).	
Project Delays or other challenges	Minimal	
Milestones	Actual Start Date	July 2012
	Completion Date	December 2017
	Operational Date or other Major Milestones	Phase 1 completed in 2015 Phase 2 completed in 2016 Additional work completed December 2017
Project activities for the reporting year	<p>Two distinct activities occurred:</p> <ol style="list-style-type: none"> 1. A number of trees planted during previous phases either failed or were deemed inappropriate for the area based upon future height. A number of replacements and relocations were undertaken. 2. The final segment of the paved and fully accessible trail from the ‘strip’ to the downtown was completed. 	
Stakeholder Involvement:	All stakeholders and members of the RMI Advisory Committee were kept apprised of activity during the year.	

Project outcomes to date:

The result has been a dramatic change to sections of the Trans-Canada Highway boulevards through the community.



The importance of the Trans Canada landscaping project cannot be underestimated in enabling us to change the perception of our community from a gas stop on the highway to a destination of choice for outdoor adventure. It has also been the catalyst for collaboration between multiple agencies to create the opportunity for residents and visitors alike to connect by foot or bike from the highway to our downtown core, and for Tourism Golden to provide visitor information services along the way. We hope to see continued investment in this project in the years to come.

-Joanne Sweeting, Executive Director, Tourism Golden

Communications Activities:

See Appendix 2

Project Term	Revised 2015-17 RDS	
Project Title	Visitor Sign Program	
Project description	<p>This is the continuation of a 2007-2011 program designing and installation a suite of directional and interpretational thematically consistent signs throughout the community. While providing a much clearer, aesthetically pleasing, and informative focus for visitor way finding and information, the program also assists in eliminating existing clusters and sign “pollution”.</p> <p>The focus of the program for 2017 was the construction of an iconic community entrance sign located at the intersection of Highways 1 and 95.</p>	
Project rationale	<p>This continues to be clearly identified by community partners and citizens as the highest priority item for tourism infrastructure improvements. Golden’s suffers from an acute range of negative impacts surrounding signage, which continues to compromise visitor experience and create confusion, deter community efforts at beautification, lower community pride, and annoy residents.</p> <p>Coupled with a current condition of scattered, poorly designed, and inadequate public and business signs, the complete lack of consistent, informative, attractive, and simple messages that are paramount to a resort based community has been widely considered as the highest detriment to visitor satisfaction and resident pride in Golden.</p> <p>This may also be responsible for the lack of any significant movement toward beautification and architectural renewal by local business.</p>	
Project status	Complete. (Under current RDS goals)	
Project Delays or other challenges	Tendering frustrations in 2016. Project took longer than anticipated in 2017 once initiated due to supply chain disruptions between general contractor and sub-trades.	
Milestones	Actual Start Date	July 2012
	Completion Date	November 2017
	Operational Date or other Major Milestones	Complete
Project activities for the reporting year	After an unsuccessful tendering effort in 2016, the project was re-tendered in February with much better pricing. Over the course of the year the sign was built.	
Stakeholder Involvement:	The RMI Advisory Committee was heavily involved in final design and the entire community weighed in on three options for design. Over 74% of survey respondents chose the basis of the final design.	

Project outcomes to date:

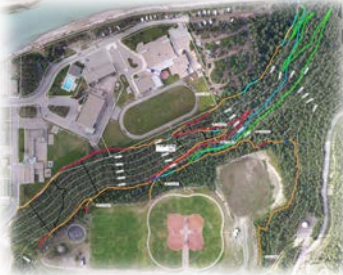
As above.



Golden's iconic entrance sign may hold title as the largest free standing municipal entrance sign in the province. It is double sided for view from either a west or east approach and fully lit for maximum visibility.

Communications Activities:

See Appendix 2

Project Term	Revised 2015-17 RDS	
Project Title	Trail Enhancements	
Project description	The project anticipates capital funding assistance to the municipality in the redesign and extension of a portion of the trail network within the town's boundary.	
Project rationale	A portion of the 'Rotary Trail' network climbs a steep hillside within the community and the gradient is severe enough to prevent casual walkers from scaling it. Located directly by the campground and popular visitor walking trails on the river, redesigning the path will provide a far better and enhanced experience for visitors including an extension piece with views within the Kicking Horse Canyon.	
Project status	Underway	
Project Delays or other challenges	Significant delays due to windstorm. Project outcome delayed by over a year as a result.	
Milestones	Actual Start Date	July 2015
	Completion Date	August 2018
	Operational Date or other Major Milestones	Logging cleanup in winter 2017/2018.
Project activities for the reporting year	An engineering firm was engaged to develop location options for the new trail and a preferred option was chosen between Council and the Golden Cycling Club. Rough-in of the trail was completed in 2016. In 2017 work continued with a goal for completion by year end; however, in June the community experienced a windstorm not seen in 50 years. The result was a complete closure of the trail system due to extensive fallen timber, debris, and hazard trees remaining. The project was necessarily expanded to implement a forest harvesting prescription to be carried out over the winter months, with a return to rehabilitate the trails in the spring of 2018.	
Stakeholder Involvement:	<p>The cycling club played an integral role in helping ground-truth and approve the eventual trail location.</p>  <p><i>The RMI funding has been integral to the development of recreational trails within Golden that benefit tourists and residents alike. Without RMI funding the redevelopment of the Rotary Trail from the public campground to the trail network on Mountain Shadows would not be possible. This trail is a vital link between the town core and a popular trail network. Further, the funding from RMI has strengthened the relationship between the Town of Golden and the volunteer Golden Cycling Club which manages and takes care of all trail maintenance.</i></p> <p><i>From my perspective, the RMI fund is bringing together community groups while also providing infrastructure critical to our success as a destination resort community.-Magi Scallion,</i></p> <p style="text-align: right;">Golden Cycling Club Project Manager</p>	

Project outcomes to date:

As of the end of 2017 the entire project is stalled while forest harvesting operations begin to remove the timber over a number of hectares. The campground was used as a staging area for logging operations.



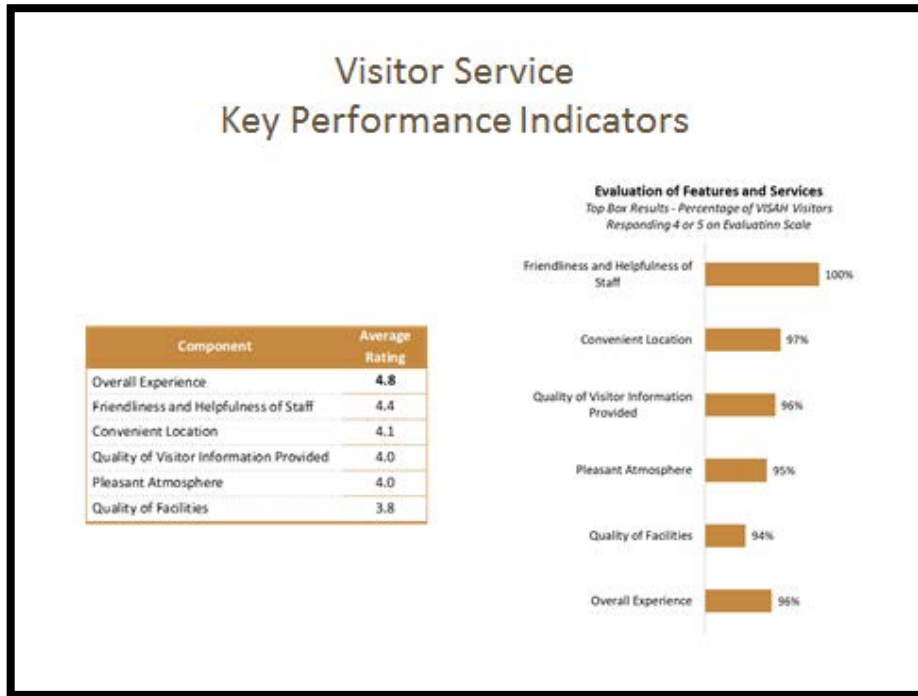
Communications Activities:

See Appendix 2

Project Term	Revised 2015-17 RDS	
Project Title	Visitor Information Infrastructure	
Project description	In a renewed partnership focus between Destination BC, Tourism Golden, MOTI, and the Town of Golden, a seasonal based visitor services infrastructure plant was developed at a strategic location on the Trans Canada corridor in town, including a small kiosk and accompanying amenities.	
Project rationale	<p>After ten years of operations, the <i>British Columbia Visitor Centre @ Golden</i>, one of 6 'gateway' visitor centres throughout the province, closed in 2016; the result of immense societal changes to the way travelers plan and conduct their trips as a response to global technological change.</p> <p>In a renewed lens for visitor services supported by Destination BC research, a new series of tactics to approach visitor services was proposed in Golden, which would include a continuing though diminishing financial partnership with DBC to eventually match similar funding levels of other BC communities for visitor services. The new approach is community led and industry driven, allows for more flexibility, is responsive to seasonal demands and employs multiple channels to reach a broader range of visitors. It plans to achieve these goals by providing visitor services using online, mobile and crowd-sourcing channels as well as fixed locations.</p> <p>Key to this new approach was the establishment of a new, seasonal site for visitor services to travelers. The most logical, intuitive and ultimately successful location is was the former site of the Trans Canada Highway weigh scales within town limits. Several years ago, the weigh scales were moved to a location west of town in order to modernize and expand the facility.</p>	
Project status	Complete	
Project Delays or other challenges	Huge potential for them; minimized by competent project management and foresight. Great challenges in corralling numerous trades, architects, builders, and authorities.	
Milestones	Actual Start Date	2016
	Completion Date	August 2017
	Operational Date or other Major Milestones	Open to the public in August.
Project activities for the reporting year	This was the most intensive operational project of the year requiring a high functioning project management team and a number of suppliers, contractors, engineers, and other agency consultation. In the span of 6 months in a flurry of activity a formerly derelict pull out and site of a weigh scale became a fully functional seasonal visitor centre.	
Stakeholder Involvement:	A continuing dialogue with the DMO and Destination BC began shaping the project. Council met directly with Minister Stone at UBCM who offered support for the project. The Ministry of Transportation and Infrastructure was instrumental in the partnering, permitting, and contributing the paving required for the area.	

Project outcomes to date:


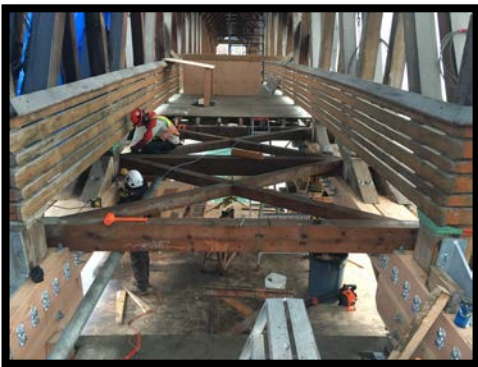

This project represents one of the most successful, multi-partner initiatives in Golden’s RMI repertoire. From an operations perspective, the centre saw over 10,000 visitors in its first month of opening. The centre is operated exclusively by Tourism Golden, our DMO and owned by the Town of Golden, on lands permitted to us by MOTI.



Communications Activities:

See Appendix 2

Project Term	Revised 2015-17 RDS
Project Title	Pedestrian Bridge Repair
Project description	<p>Numerous and targeted structural deficiencies required to eliminate long term water damage and rot of the sub-structure. This included:</p> <ul style="list-style-type: none"> -Removing shingles and membrane assembly on the top side of both bottom chords across the entire structure to eliminate moisture collection on chords -Welding the steel connections between arch timbers and foundation on all four arch supports -Replacing the timber and installing new steel splice plates on all foundation points to remove decay in the bottom chord at the abutments -Installing cutters and downspouts along roof to re-direct water flow away from the bridge -Installing mechanical fasteners to reinstate capacity inside eastern truss to address shear block failure -Repairing masonry and oak shear keys.
Project rationale	<p>The Kicking Horse River Pedestrian Bridge is both the backdrop and ethos for a number of high profile events and recurring activities as well as private functions. The bridge has become an immutable icon for Golden’s identity, brand, and history. It represents an immensely significant symbol of the community’s tourism product offering, seeing hundreds if not thousands of visitors per year, numerous wedding photo opportunities, as a backdrop to the community square, and as an increasing if not vital daily commuter route within town. It is without question, Golden’s symbolic centerpiece for identity, and for the community a metaphor for volunteerism and collaboration.</p> <p>Golden has and continues to use the bridge as this symbol consistently in tourism marketing collateral that is distributed throughout western North America in hard copy and globally by digital means. It is as indelible in scale of importance to Golden as the Empire State Building is to New York, as Big Ben is to London, as the Eiffel Tower is to Paris.</p> <p>In late 2016 it was discovered through an engineering assessment that the bridge was critically afflicted with a structural rot in its bottom near-abutment structures to the extent that closure was required and the prognosis without immediate repair was structural failure and imminent collapse.</p> <p>The immediacy and magnitude of funding required for this project overwhelmed the municipality. It was viewed unanimously and immediately by the local RMI Advisory Committee as a necessary project to fund in part, effectively overriding other RMI commitments.</p>
Project status	As of December 2017, the project was 85% complete.
Project Delays or	Challenging weaving through disputes between engineers and builders. This was a

other challenges	specialty project requiring specific skill sets and experience in both fields.	
Milestones	May 2017	Remove shingles, weld steel connections
	November 2017	Remove/replace chord timbers, install fasteners
	(March 2018)	Replace side timbers, install gutters
Project activities for the reporting year	By year end the bridge had been restructured and was out of danger of failure.	
Stakeholder Involvement:	RMI advisory members and the public were kept advised of progress on a regular basis.	
Project outcomes to date:	85% complete. Sidewalls to be completed by March 2018.	
	  	
Communications Activities:	See Appendix 2	

1.5. Completed RMI Projects

Learnings emerge at all stages of project development and implementation. Reviewing successes and lessons learned provides an opportunity to profile the continued success of RDS projects and allows knowledge to be shared amongst stakeholders to add value and/or efficiency to future projects.

Project Name	Successes	Lessons Learned
Visitor Sign Strategy	<ul style="list-style-type: none"> Highly visible and striking architecture. Wayfinding for public. Thematic motif. High degree of tourist and local approval. 	<ul style="list-style-type: none"> Cost of such architecture Time for design and permitting can be long. They don't drive visits, but they do add to experience.
Visitor Amenity Hubs	<ul style="list-style-type: none"> Multiple uses- washrooms for campground and general public, store, public information. 	<ul style="list-style-type: none"> Build green, but avoid building to LEED.
Banners	<ul style="list-style-type: none"> Street animation Unique design reinforces identity of community Use vinyl coated mesh for longevity 	<ul style="list-style-type: none"> Unique design means higher cost Cost of bracketing significant Roadway restrictions can limit size and height

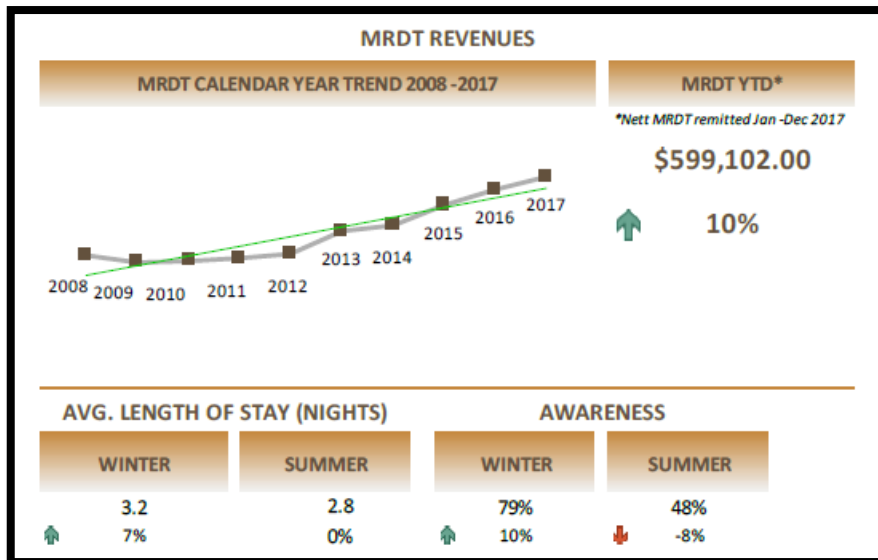
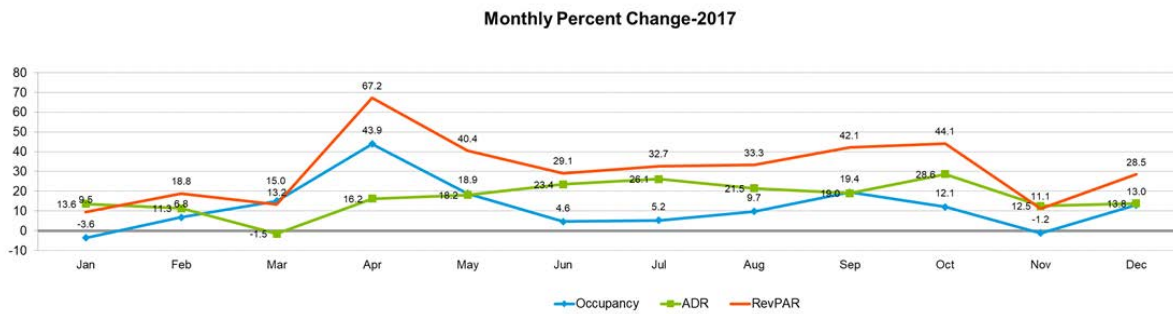


2. Economic Outcomes

The data in this section is collected by both the resort communities and the Whistler Centre for Sustainability (WCS) and are included in the Annual Program Report developed by WCS. While specific projects can impact these results, the results in this area only show trends over time and should be considered as a long-term impacts of investments in infrastructure, projects and programs.

Accommodation Sector Performance (data courtesy of Tourism Golden)

Accommodation sector performance provides an indication of the size and health of overall tourism economy (more specifically the accommodation sector), by tracking changes in room revenue or room nights sold. Overnight visitors to the communities tend to participate in more experiences than day visitors, and the additional hours spent in the resort result in increased spending patterns and greater contributions per visitor to the local economy. Considering the variation in this indicator throughout the year provides a window into the community's success at growing tourism throughout the four seasons.



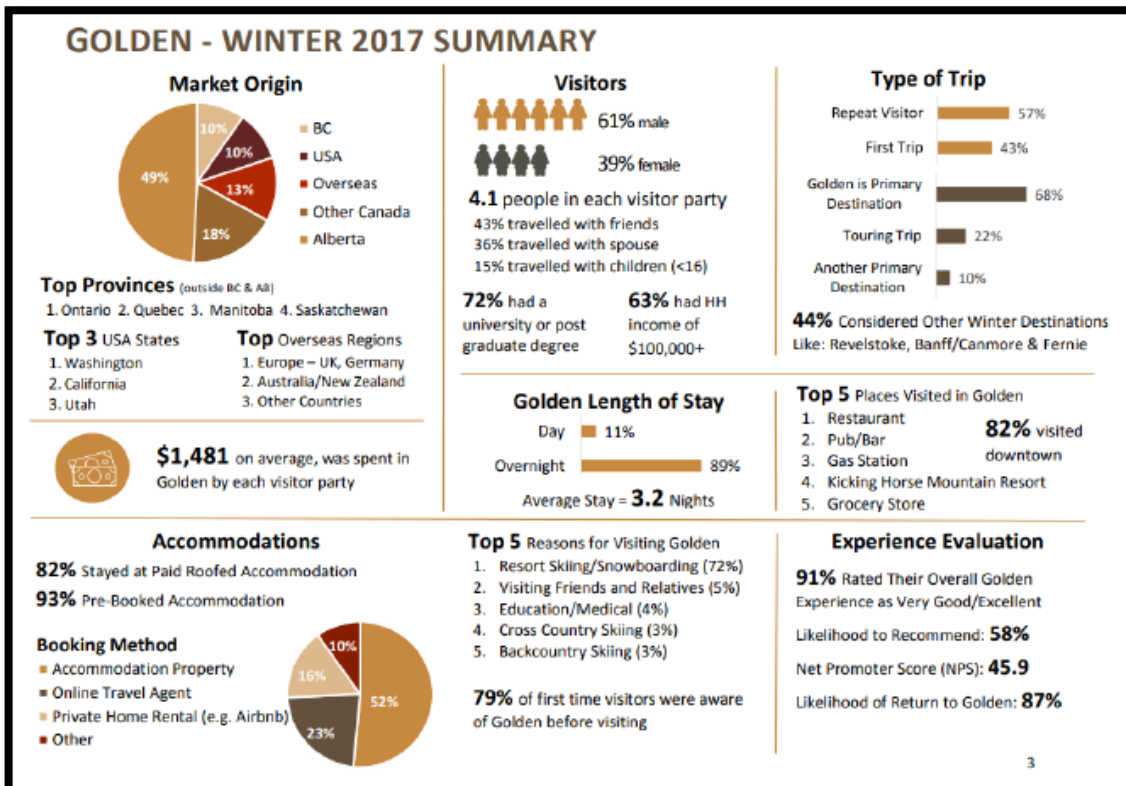
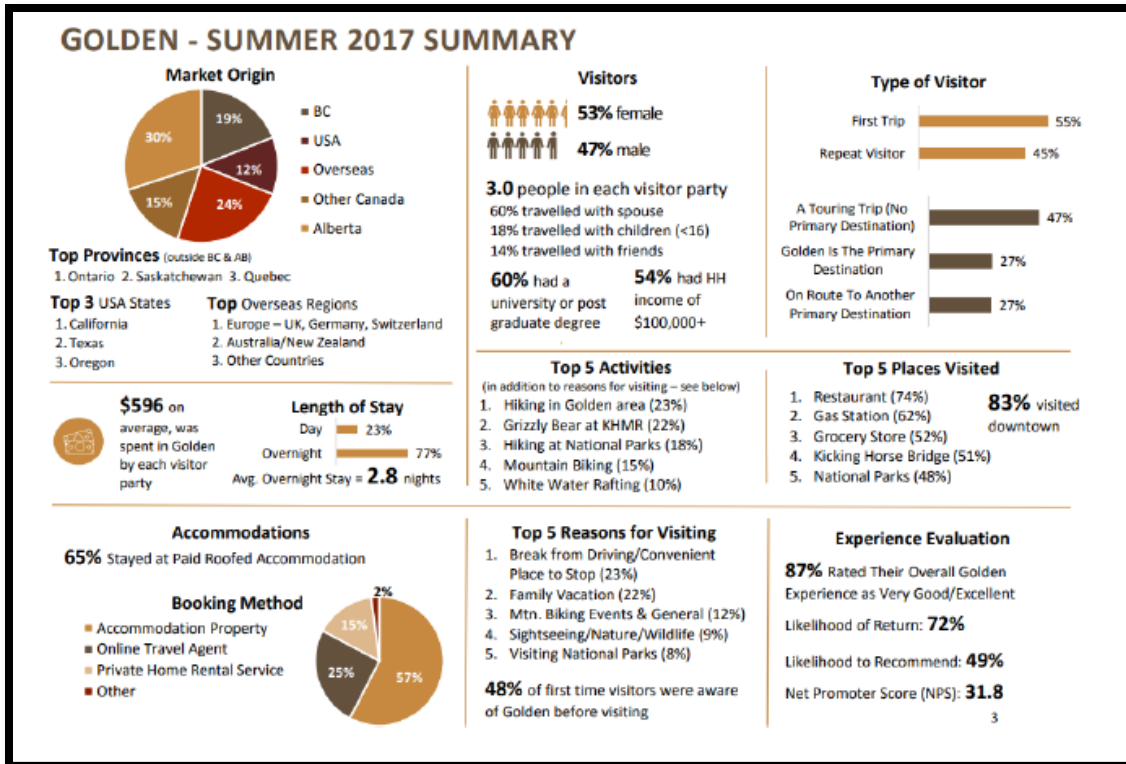
Despite the exponential growth of short term rental vacation properties, MRDT revenues increased by 10%, signalling increased revenues for accommodators and comparing favourably against the 2% BC average. Accommodation occupancies increased 11% on average through the year, most notably in March, April, May, September, and October.

By comparison, Alberta Resorts occupancy grew just 2.3% and the average ADR in Golden was 18.8%, eclipsing the variance of just 9.2% in Alberta.

Visitor Numbers (data courtesy of Tourism Golden)

A resort communities' tourism economy is dependent on visitation. Visitor numbers provide an understanding of the health of the tourism economy, as well as the popularity the community as a tourism destination, quality of the service levels, and the perceived value of tourism offerings. Depending on the employed methodology, visitor numbers includes day visitors and overnight visitors differing from accommodation sector performance.

Considering the variation in this indicator throughout the year provides a window into the community's success at growing tourism throughout four seasons.



SOCIAL MEDIA

3,844,401 IMPRESSIONS



INSTAGRAM
ENGAGEMENT
89,000



FACEBOOK
ENGAGEMENT
78,000



TWITTER
ENGAGEMENT
1,200



YOUTUBE VIEWS
13,108

FACEBOOK TOTAL REACH
3,663,093

WEBSITE ANALYTICS



UNIQUE VISITORS

175,549
↑ 16%

ORGANIC TRAFFIC

151,139.00
↑ 13%

DIGITAL CAMPAIGNS

42,047.00
↑ 10%

WEB VISITS

231,972
↑ 11%

TOP 5 COUNTRY OF ORIGIN BY VISIT

	CANADA	168,030	↑	8%
	USA	33,393	↑	27%
	UK	6,510	↓	-31%
	GERMANY	3,726	↓	-6%
	AUSTRALIA	3,640	↑	47%

CONTENT DRILLDOWN | PAGEVIEWS

ALL ACTIVITIES	268,001	↑	4%
BIKING	14,389	↓	-18%
FISHING	10,827	↑	12%
HIKING	16,160	↓	-6%
PARKS	24,897	↑	92%
RAFTING	12,788	↓	-13%
SNOWMOBILING	11,060	↓	-7%
SKIING	9,542	↑	53%
HELI & CAT SKI	2,656	↑	37%
SKI TOURING	3,568	↑	10%

PUBLIC & MEDIA RELATIONS

EARNED MEDIA
FEATURES
26

STAKEHOLDER
NEWS OPEN RATE
50%

CONSUMER
DATABASE
12,474

CONSUMER
NEWS OPEN
20%

3. Conclusion and Outlook

It is now proven through research by Destination BC that the tourism industry outpaces all other industries in British Columbia in revenues returned to and within the province. Golden is no exception to this trend as 2017 marks the 8th consecutive year of growth in the sector including a 120% increase in MRDT revenues since 2007. Golden outperforms BC provincial figures and Alberta resorts. Local DMO research as led to an estimate of the economic benefit of tourism to the Golden are at more than \$100 million annually.

The benefits of RMI program accomplishments are not always immediately apparent, but are revealed through time. Great optimism has returned to this community and other business development activity has returned with unprecedented residential and commercial sector initiatives.



Confidence in the local economy, public (RMI) and private sector new and renewal projects, exceptional marketing outputs by the DMO, and an outstanding product offering for the tourism industry in the Golden area are all contributing together once again to make Golden a growing resort destination.

In 2018 the Town looks forward to wrapping up the final components of projects mentioned in this report,

renewing significant partnerships for maintenance of our summer and winter trail networks in the region, and ensuring sufficient funds are set aside for our next 'big thing' – the development of a sea wall and new downtown riverside destination area that promises to transform the look and feel of Golden.

Activity	Budgeted Amount - RDS	Jan. 1 - March 31 Expenditures	Q2 and Q3 Apr. 1 - Sept. 30 Expenditures	Oct. 1 - Dec. 31 Expenditures	Total Expenditures 2015	Current Status - please update with every quarterly report submission (as necessary)	Communication Updates/Opportunities/Milestones
Hwy 1 Corridor Enhancement	\$613,626	\$4,873	\$608,753	\$7,625	\$621,252		
Visitor Sign Program	\$102,713	\$5,394	\$96,916	\$11,660	\$113,970		
Spirit Square Seating							
Trails Enhancements							
Visitor Information Infrastructure				\$4,735	\$4,735		
Snowmobile Trail Grooming	\$45,000	\$22,500	\$22,500		\$45,000		
Monitoring Success		\$16	-\$16				
TOTAL	\$761,339	\$32,783	\$728,154	\$24,020	\$784,957		

Financial Snapshot	
Reserve as of Jan. 1, 2015	\$1,090,677
Funding provided in 2015	\$554,708
Total available for 2015	\$1,645,385
Total currently available (total less expenditures)	\$860,428

Please add any other notes below

Activity	Budgeted Amount - RDS	Jan. 1 - March 31 Expenditures	Apr. 1 - June 30 Expenditures	July 1 - Sept. 30 Expenditures	Oct. 1 - Dec. 31 Expenditures	Total Expenditures 2016	Current Status - please update with every quarterly report submission (as necessary)	Communication Updates/Opportunities/Milestones
Corridor Enhancement	689,000.00	31,252.16	247,901.11	410,620.42	40,389.01	730,162.70	Phase 2 Complete - paving to come this spring	upon paving of final link - late spring
Visitor Sign Program	150,403.09	4,806.00	12,478.03	4,032.04	18,482.60	39,798.67	In process of retender	Upon start of construction late spring
Spirit Square Seating	30,000.00			5,354.38	-	5,354.38	Project Cancelled	none
Trails Enhancements					33,750.00	33,750.00	90% complete	Grand opening May 2017
Visitor Information Infrastructure	95,265.00	29.23	2,974.93	13,265.00	17,088.95	33,358.11	Detail and engineered design now underway	Upon detailed design confirmation and start -spring 2017
Snowmobile Trail Grooming	45,000.00	22,500.00		22,500.00		45,000.00	steady as she goes	No further communications anticipated
TOTAL	1,009,668.09	58,587.39	263,354.07	455,771.84	109,710.56	887,423.86		

Financial Snapshot	
Reserve as of Jan. 1, 2016	\$860,428 (only accurate once 2015 Q4 complete)
Funding provided in 2016	\$689,182
Total available for 2016	\$1,549,610 (only accurate once 2015 Q4 complete)
Total currently available (total less expenditures)	\$662,186 (only accurate once 2015 Q4 complete)

Please add any other notes below

Appendix 2 2017 Communications Activities

All attached News Releases were also published on the Town of Golden's website and posted in abbreviated form often with photos on the Town of Golden's Facebook page. Several local radio station ads associated with these projects were also commissioned.



For Immediate Release

May 22, 2017

Resort Municipality Initiative helps fund multiple projects in Golden

It has been a busy start to construction season in Golden, with multiple projects on the go to make improvements and enhancements to the community – many of which are funded by the Resort Municipality Initiative (RMI) program.

The RMI program is managed by the Ministry of Jobs, Tourism and Skills Training providing \$10.5-million per year in funding to assist 14 tourism-based municipalities to support and increase visitation.

“The importance of RMI funding in our community cannot be understated,” says Mayor Ron Oszust. “It provides us the ability to fund improvements in our community that the destination traveler has come to expect and we could otherwise never afford.”

Roughly \$1.2 million in RMI money has been allotted to some major projects this year, including planning and construction of a new seasonally operational visitor kiosk and parking area at the old weigh scale site on the Trans Canada Highway Corridor; completion of the final link of the pedestrian path from downtown to the Highway corridor; and the construction of a newly designed community entrance sign at the junction of Highways 1 and 95.

Anticipated to be complete by mid-summer, the visitor centre is a great example of a partnership between Destination BC, Tourism Golden, the Ministry of Transportation and Infrastructure (MOTI) and the Town of Golden. The new site will feature a seasonal staffed kiosk; washroom facilities; and Wi-Fi infrastructure for public consumption. The kiosk and roof structure are being moved from the existing provincial visitor centre plaza in cooperation with Destination BC and the MOTI. There will also be a place for a vendor, a dog run area and a fee-for-use Sani dump station.

“The location of the new visitors centre provides an ideal westbound exit and large parking area that is currently well used as a temporary rest stop for travelers, including RV’s and commercial trucks,” says Town of Golden CAO Jon Wilsgard. “In addition, the area when complete will be a great enhancement to the landscaping that was done on the boulevard

adjacent to Highway 1 and the site is the endpoint of the pedestrian path developed by MOTI to link to Golden's downtown area."

Just across from the visitor centre, residents may notice that the long-awaited corporate entrance sign has taken shape at the Highway 95 and Trans Canada Highway intersection. The project is expected to be complete by July 1st.

"This project is fully funded by RMI dollars to the tune of \$500,000. It is pretty iconic for Golden," says Wilsgard.

Finally, RMI dollars have been allotted to Trail enhancements behind Golden Secondary School leading up to Keith King Memorial Park (KKMP).

Located directly by the campground and popular visitor walking trails on the river, the redesigned path will provide a far better and enhanced experience for visitors with fencing, signage and a grade that makes the hike/bike more accessible.

Golden has participated in the RMI program since 2007.



For Immediate Release

June 5, 2017

The Rotary Selkirk Hill Connector Trail grand opening celebration

On June 17th, grab the family and come on out for an exciting community event celebrating the grand opening of the new Rotary Selkirk Hill Connector Trail!

Beginning at 1 p.m., join the Town of Golden and the Golden Cycling for the ribbon cutting at the trail head behind the Golden & District Area. And don't forget the kids! The Rotary Club will be providing tickets for a free BBQ lunch for the first 50 children who show up for the ribbon cutting. There will be fun activities put on by the Interact Club, who have once again partnered with the Town of Golden.

A trail tour will follow, ending at Keith King Memorial Park, where a variety of activities are planned in partnership with Golden 24, 24hr mountain bike race. There will be a BBQ, the Farmer's Market and live music!

Located directly by the campground and popular visitor walking trails on the river, the redesigned path will provide a far better and enhanced experience for visitors with fencing, signage and a grade that makes it more accessible for foot traffic use. This much needed refreshment was funded by the provincial government's Resort Municipality Initiative (RMI) and the Columbia Basin Trust (CBT).

"We are thrilled to have received funding from the RMI and CBT to develop recreational trails within Golden that benefit tourists and residents alike," says Town of Golden Mayor Ron Oszust. "Without this funding, projects like the redevelopment of the Rotary Trail from the public campground to KKMP would not be possible. This trail is also a vital link between the town core and a popular mountain biking trail network."

The grand opening event will run from 1 p.m. to 5 p.m., on Saturday, June 17th.

"This trail is a great way for people of all ages and abilities to get re-connected with nature," says Manager of Recreation Services Jordan Petrovics. "The trail width was constructed to accommodate wider strollers and was built with an easy grade to make for an enjoyable climb. The end product provides a new active link to our existing recreation infrastructure. The public now has a 'green way' to access our community play spaces. This trail also creates new opportunities for additional events in recreation facilities like the Golden 24

race. The grand opening event marks the official opening of the trail but the improvements will continue to happen well into the fall.”

This initiative is also made possible by the Community Fund for Canada’s 150th, a collaboration between the Golden and District Community Foundation, the Government of Canada, and extraordinary leaders from coast to coast to coast.



For Immediate Release

July 21, 2017

Resort Municipality Initiative projects nearing completion

It has been a busy construction season in Golden with multiple projects on the go to make improvements and enhancements to the community – two of which have been funded by the provincial government's *Resort Municipality Initiative* (RMI) and undertaken by the town.

“The importance of RMI funding in our community cannot be understated,” says Mayor Ron Oszust. “It has provided us the ability to fund improvements in our community that the destination traveler has come to expect and we could otherwise never afford.”

Nearing completion and together totalling over \$1.3 million is the new seasonal visitor information centre and community entrance sign, both located on Highway 1 in Golden.

Anticipated to be substantially complete by July 31st, the seasonal visitor centre is a great example of a partnership between Destination BC, Tourism Golden, the Ministry of Transportation and Infrastructure (MOTI) and the Town of Golden. The new site will feature a seasonally staffed welcome area; washroom facilities; sani-dump; dog run; and Wi-Fi infrastructure for public consumption. The centre will be owned by the Town of Golden with visitor services provided by Tourism Golden.

“The location of the new visitors centre provides an ideal westbound exit and parking area that is currently well used as a temporary rest stop for travelers, including RV's and commercial trucks,” says Town of Golden CAO Jon Wilsgard. “In addition, the area will be a great enhancement to the landscaping that was done on the boulevard adjacent to Highway 1 and the site is the endpoint of the pedestrian path developed in partnership with the Province to provide an important link between Golden's downtown and the highway frontage.”

Just across from the visitor centre, the long-awaited corporate entrance sign has taken shape at the Highway 95 and Highway 1 intersection. With the concrete structure in place, the various stone, timber, lights, and metal claddings will follow; the project is expected to be substantially complete by mid-August.



For Immediate Release

September 18, 2017

Pedestrian Bridge repairs to begin this month

Beginning September 25th, the Kicking Horse Pedestrian Bridge will close temporarily in order to undergo structural repairs.

International Timber Frames Inc. and sub-contractor Jackson Contracting & Excavating spent the last few weeks of August building and installing the jacking pads that will enable the lifting of the bridge to make the repairs, with the project expected to wrap up by the end of November.

As a result of changes to the original bridge design, superstructure additions and adjacent landscaping, rain and melt water has been inadvertently and to varying degrees, directed toward the abutments and bottom chord bearing points, subjecting them to long term and continual moisture.

Structural timbers subjected to continuous moisture has resulted in premature decay and failure of the foundational elements of the Bridge since its construction 16 years ago.

A scheduled condition assessment of the structure in 2016 uncovered these structural issues and causes for failure. “The findings came as a complete shock to staff,” says Town Chief Administrative Officer Jon Wilsgard. “Admittedly, we hadn’t conducted any detailed structural inspections since it was built, but for something that is supposed to last several centuries, to be in this bad a shape after so little time is something that could have never been reasonably forecast.”

While most of the repairs will be completed during the closure, some of the work has already been done, including the required welding of the metal brackets underneath the bridge and stripping of the shingles on the outside chords. This allowed the Town to keep the bridge open for the summer so as not to disturb our busy tourist season.

With a hefty price tag attached to the proposed repairs, the Town was compelled to postpone some projects around the community, dip into reserves, and face the prospect of having to borrow a portion of the funds to make the required repairs.

Thankfully, in April, Columbia Basin Trust awarded the Town a grant for \$133,000 to go toward repairs.

“The grant from CBT helped to alleviate the need to borrow anything short term,” says Mayor Ron Oszust. “The Pedestrian Bridge represents an immensely significant symbol of the community’s tourism product offering, seeing hundreds if not thousands of visitors per year, and acting as an increasing if not vital daily commuter route within town. It is without question, Golden’s symbolic centerpiece for identity and for the community a metaphor for volunteerism and collaboration. It is for these reasons that Council was very supportive of Staff’s proposal to not only begin the repairs, but to seek out any grant funding available to ensure that this iconic structure remains safe and intact for many years to come.”

The Kicking Horse Pedestrian Bridge will be closed to the public beginning September 25th and will remain closed until approximately the end of October. There will be signage posted at the bridge to inform the public, and we will inform residents of any changes as the information is provided to us. During the closure, please take an alternate route. We apologize for any inconvenience this may cause.



For Immediate Release

September 28, 2017

Update on cleanup efforts in wake of July wind storm

In the months following the July 2017 windstorm, cleanup efforts have been ongoing. It has been a long process and the Town's works crews and contracted arborists have worked very hard to clean up, and ensure the public safety of, the Rotary Trail and many other areas in the community.

While prioritizing areas of the community needing attention, certain sections of our trail system unfortunately had to be pushed lower on the clean up priority list. As a municipality, it is our responsibility to target areas of primary concern for public safety when planning the clean up schedule. After the July storm, those priority areas included areas adjacent to homes, public parks and streets. It took tremendous effort on behalf of our crews to ensure that the many areas in our community that fall within these priority areas were at the top of the list when cleanup efforts commenced.

The blow down area behind the campground and schools, which is also the site of the new Selkirk Connector Trail development, remains probably the single largest area left to deal with in terms of clean up. Considerable damage was done in this area. There are a significant number of fir trees down and some that are still standing but will need to come down to ensure public safety.

"In the interest of a much more comprehensive clean up, and to ensure we are doing our due diligence to the taxpayer, we are currently exploring the possibility of a small-scale salvage harvest operation in the area," says Town of Golden CAO Jon Wilsgard. "The outcomes of a small-scale harvest would protect and preserve the integrity of the trail, ensure public safety and provide a revenue source to offset the cost of the operation as the fibre would be sold locally."

The Town has enlisted the help of professionals to assess the situation in order to explore every option for safe removal of the trees and debris caused by the storm. Given the sheer number of downed and damaged trees and the fact that a great many are likely merchantable, a small-scale salvage could well be justified.

In addition, professionals have also advised us of some forest health issues in that area – there is clear evidence of fir beetle - which may provide even more rationale for us examining the option of a small-scale harvest.

The Town will update the community on the plan of action once the results of the assessment are known and a business case for the small-scale salvage has been developed.

In the meantime, we ask that the community not enter the area as it is officially closed and is deemed unsafe at this time. In addition, we ask that the public not remove any downed timber in the area.



For Immediate Release

November 2, 2017

Pedestrian Bridge closure update

The Kicking Horse Pedestrian Bridge will likely be closed to the public beginning Monday, November 6th, 2017 and may remain closed until mid-December, 2017, in order to undergo structural repairs.

International Timber Frames Inc. and sub-contractor Jackson Contracting & Excavating have already built and installed the jacking pads that will enable the lifting of the bridge to make the repairs, with the project expected to wrap up by the end of January.

“Closure dates will be subject to change, pending the speed of progress of necessary repair works to the abutment structures as communicated to the public previously this year,” says Town of Golden CAO Jon Wilsgard. “Closure signs will be posted on site, and we will inform residents of any changes as information is provided to us by the project manager.”

As a result of changes to the original bridge design, superstructure additions and adjacent landscaping, rain and melt water has been inadvertently and to varying degrees, directed toward the abutments and bottom chord bearing points, subjecting them to long term and continual moisture.

Structural timbers subjected to continuous moisture has resulted in premature decay and failure of the foundational elements of the Bridge since its construction 16 years ago.

A scheduled condition assessment of the structure in 2016 uncovered these structural issues and causes for failure.

“The findings came as a complete shock to staff,” says Town Chief Administrative Officer Jon Wilsgard. “Admittedly, we hadn’t conducted any detailed structural inspections since it was built, but for something that is supposed to last several centuries, to be in this bad a shape after so little time is something that could have never been reasonably forecast.”

While most of the repairs will be completed during the closure, some of the work has already been done, including the required welding of the metal brackets underneath the bridge and stripping of the shingles on the outside chords. This allowed the Town to keep the bridge open for the summer so as not to disturb our busy tourist season.

Funding for the repairs comes through Town of Golden reserves, the Resort Municipality Initiative, and a grant from the Columbia Basin Trust.



For Immediate Release

November 23, 2017

Update on Pedestrian Bridge closure

A notice to residents a section of the dike trail will be closed periodically next week for rock hauling and removal from the south side of the Kicking Horse Pedestrian Bridge.

Rock hauling will begin on Monday, November 27th, with expected completion at the end of the week. Hauling trucks will access the dike trail from 7th Ave and barricades will be placed at the trail access points as needed during times of active work.

The Town of Golden has been notified by the contractor that work on the Pedestrian Bridge is going well, and the south side of the bridge is expected to be lowered by the end of the week. Repair work on the north side of the bridge will commence following lowering of the structure on the south side.

The Pedestrian Bridge will likely remain closed until mid-December, 2017, in order to undergo repairs that involve lifting of the structure. The project is expected to wrap up by the end of January.

“Closure dates will be subject to change, pending the speed of progress of necessary repair works to the supporting timber structures as communicated to the public previously this year,” says Town of Golden CAO Jon Wilsgard. “Closure signs will be posted on site, and we will inform residents of any changes as information is provided to us by the project manager.”

As a result of changes to the original bridge design, superstructure additions and adjacent landscaping, rain and melt water has been inadvertently and to varying degrees, directed toward the abutments and bottom chord bearing points, subjecting them to long term and continual moisture.

Structural timbers subjected to continuous moisture has resulted in premature decay and failure of the foundational elements of the Bridge since its construction 16 years ago.

A scheduled condition assessment of the structure in 2016 uncovered these structural issues and causes for failure.

“The findings came as a complete shock to staff,” says Town Chief Administrative Officer Jon Wilsgard. “Admittedly, we hadn’t conducted any detailed structural inspections since it was built, but for something that is supposed to last several centuries, to be in this bad a shape after so little time is something that could have never been reasonably forecast.”

Funding for the repairs comes through Town of Golden reserves, the Resort Municipality Initiative, and a grant from the Columbia Basin Trust.



For Immediate Release

December 15, 2017

Pedestrian Bridge reopens to public

Just in time for Christmas, the Kicking Horse Pedestrian Bridge reopens today after undergoing repairs over the past six weeks.

Contractors International Timber Frames Inc. and sub-contractor Jackson Contracting & Excavating have been undertaking structural repairs to the north and south side of the bridge.

This work included lifting the north and south ends of the bridge to cut, remove and replace sub-structure timber arch elements at all four corners of the structure. In addition, crews are installing Borate rods to protect against future moisture related rot.

With this first phase of repair work now complete, the contractors have advised the Town that the bridge is now safe for pedestrian use and work will cease over the holidays.

In January, the more visible second phase will begin, including the installation of railing height side walls on the exterior length of the bridge on both sides. This is anticipated to continue throughout January and February, during which time the bridge will remain open for public use.

Over the spring and summer of 2018, rain gutters will be installed on the bridge. Again, the bridge is expected to remain open to the public during this time.

The Kicking Horse Pedestrian Bridge repair project was initiated this year after a scheduled condition assessment of the structure in 2016 uncovered these structural issues and causes for failure. As a result of changes to the original bridge design, superstructure additions and adjacent landscaping, rain and melt water had been inadvertently and to varying degrees, directed toward the abutments and bottom chord bearing points, subjecting them to long term and continual moisture. This resulted in premature decay and failure of the foundational elements of the Bridge since its construction 16 years ago.

Funding for the repairs comes through Town of Golden reserves, the Resort Municipality Initiative, and a grant from the Columbia Basin Trust.



For Immediate Release

December 18, 2017

Update on windstorm cleanup

With upwards of 30,000 cubic metres of debris brought down throughout the community in July's windstorm, it has been a long process to clean up, and ensure the public safety of, the Rotary Trail and many other areas in the community.

The blow down area behind the campground and high schools which is also the site of the new Selkirk Connector Trail development remains probably the single largest area left to deal with in terms of clean up. Considerable damage was done in this area. There are a significant number of fir trees down and some additional trees that will need to come down to ensure public safety. In addition, professionals have also advised the Town of some forest health issues in that area – there is clear evidence of a fir beetle infestation.

“In the interest of a comprehensive clean up, and to ensure we are doing our due diligence for the taxpayer, Council made the decision to undertake a small-scale salvage harvest operation in the area,” says Town of Golden CAO Jon Wilsgard. “The intent is to protect and preserve the integrity of the trail, ensure public safety and provide a revenue source to offset the cost of the operation as the fibre will be sold locally.”

The Town has enlisted the help of local company Pioneer Forest Consulting Ltd to manage the project including enlisting local professionals as required for the safe removal of the trees and debris caused by the storm.

The project is anticipated to start the week of January 8, 2018 and continue until at least February. The contractor has assessed the hillside and identified other trees that need to be felled due to stability issues. The Town has been advised that the area behind the campground is anticipated to be closed for most of January. We will update the community as we receive information from our contractor.

There will be a large buffer area around the activity that goes on behind the schools in order to ensure public safety.

Variable logging methods will be used depending upon the terrain and final clean up may be a combination of controlled burns and chipping.

Contractors are confident that the area won't resemble a cut block when cleanup is complete, but the texture of the area will certainly be changed.

"We will undertake rehabilitation measures to address the visual impacts left by the salvage operation," says Wilsgard.

We ask that the community not enter any marked areas as they are officially closed and remain unsafe at this time.